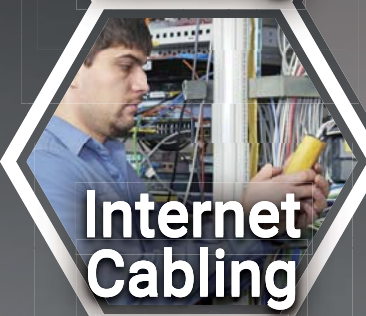


All-In-One DMM & Cable Testers



Power Testing



Internet Cabling



Home Repair



R&D



Emergency Lighting

- ⦿ **The Unique and Smart Meter Design**
- ⦿ **3.5" TFT-LCD + Back Light + Touch Panel**
- ⦿ **Multi-Meter & Cable Tester**
- ⦿ **LED Lighting**
- ⦿ **Auto Power OFF**



Detail Specification of (TCT-910) (Multi-Meter)

Specification		
High Class ADC Inside	14bit ADC (High Resolution of ADC)	
Display	3.5" TFT-LCD (320 * 240)Pixels Colors with (BackLight + TouchPanel)	
Function Select	Keyin by Touch Panel	
Multi-Meter Functions	Measure of Range	Accuracy ±((% of Reading))
DCV	0 ~ 600V	10%
ACV	0 ~ 600V	10%
OHM	0 ~ 40MΩ	10%
DCA	0 ~ 10A	10%
ACA	0 ~ 10A	10%
Continuity	0 ~ 400Ω	10% Meter beeps at < 25 Ω
Diode Test (Forward Bias)	0 ~ 2,400 V	10%
Capacitance	1nF ~ 100uF	20% For (10nF ~ 100uF)
Frequency	0 ~ 99.99KHz	10%
Temperature	(-20 ~ +250) °C	10%

Detail Specification of (TCT-910) (Cable Tester)

Cable Tester	PASS	Testing (CAT.5/5e/6/7),(TEL 2/4/6P),(Coax),(USB-A)
	OPEN	Testing (CAT.5/5e/6/7),(TEL 2/4/6P),(Coax),(USB-A)
	SHORT	Testing (CAT.5/5e/6/7),(TEL 2/4/6P),(Coax),(USB-A)
	CROSS	Testing (CAT.5/5e/6/7),(TEL 2/4/6P),(Coax),(USB-A)
	SPLIT	Testing (CAT.5/5e/6/7) (3M SPLIT Test...)
Length	Testing	(CAT.5/5e/6/7),(TEL 2/4/6P),(Coax),(USB-A) ; Accuracy ± 3%
	Toner	Output (CAT.5/5e/6/7),(TEL 2/4/6P),(Coax),(USB-A)
LED Lighting	ON/OFF	Testing
	Flash	Testing
Battery	Charge time	(4Hours approximately) for (Battery power to Full), (Rechargeable Li-Ion 2700mA/3.7V)
	Life Time	(8Hours approximately) for using. (Base on Battery power is Full)
Auto Power OFF	Power OFF automatically when Idle more than your Setting Times to sleep.	
Power Adaptor	AC(100V~240V) to DC(5V/1A)(Micro USB) for Battery Charging	



TCT-102

POE Cable Tester

- COMBO Functions for Cable Tester (POE Finder + Cable Tester)
 - one machine do dual jobs .
 - Easy to use for identify cable any conditions.
 - POE Finder:
 - The POE Finder is easy to use for identifying the existence of POE in seconds.
 - The POE Finder will identify the type of PSE with 12-36(End Span) or 45-78(Mid Span).
 - The POE Finder is able to detect what is the POE with IEEE802.3af or IEEE802.3at.
 - Cable Tester:
 - Cable Tester are able to identify the condition as below list:
 - LAN(RJ-45), TEL(RJ-11/12), Coax(F/BNC) : (Pass, Open, Short)
 - Nine LEDs to indicate the Conditions of Cables(LAN, TEL, COAX...)
- When you do the test with inserted the Cable on the Jack of Main & Remote.



TCT-108

RJ45 LAN Cable Tester

- Quickly and easily checks for cable continuity, miswiring. Open. Short. straight-through or cross pinning whatever the cable was installed or NOT.
- Port Type : RJ45
 - Included : 9V Battery, Carrying Case.



TCT-109

RJ45 / BNC LAN Cable Tester

- Quickly and easily checks for cable continuity, miswiring. Open. Short. straight-through or cross pinning whatever the cable was installed or NOT.
- Port Type : RJ45
 - Included : 9V Battery, Carrying Case.



TCT-008

EZ Checker For F / RJ12 / RJ45

- Mini size, Easy for carry, Automatic "on" and easy to operation.
- Ideal for LAN installation.
- Multifunction for F, RJ11, RJ45 & BNC, USB (Used Adapter)
- Port Type : F/RJ11/RJ45
- Included : F/BNC Adapter, RJ45/USB. 9V Battery, Carrying Case.



TCT-009

LAN Quicker with Toner

- Can Test RJ45/UTP, RJ45 / STP cabling
- OPEN, SHORT and CROSS test function
- Full LED indication Lights
- Beep sound warning
- Step/Auto Select function
- Low Battery indication
- Auto Power Off
- Included: 9V Battery, Carrying Case.



TCT-320

HDMI Cable Tester

- Test all signal pin of HDMI cables.
- LED indicator on both main unit and remote unit.
- Automatic "on" and easy to operation.
- Ideal for LCD TV HDMI connector.
- Port Type: HDMI (A)
- Included: 9V Battery, Carrying Case.



TCT-124

Coax Mapper/ ID Finder/ Toner

- Test coax cable with F-connectors or BNC connectors
- Detects and displays and Beep OPEN or SHORT conditions
- Displays PASS when no failures are indicated for each remote
- Includes four remote terminators: ID#1 (red), ID#2 (blue), ID#3 (orange), and ID#4 (green)
- Sends tone signal to center pin of coax cable



TCT-128

Coax Mapper/ ID Finder/ Toner

- Test coax cable with F-connectors or BNC connectors
- Detects and displays and Beep OPEN or SHORT conditions
- Displays PASS when no failures are indicated for each remote
- Includes four remote terminators: ID#1 (red), ID#2 (blue), ID#3 (orange), and ID#4 (green), ID#5 (red), ID#6 (blue), ID#7 (orange), and ID#8 (green)
- Sends tone signal to center pin of coax cable

