

OUTDOOR CABINET

NON-VENTED OUTDOOR WALL MOUNTED CABINET

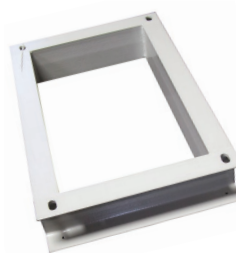


FEATURES:

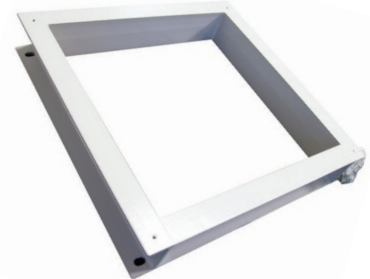
- Designed to protect sensitive network equipment from harsh environments where equipment may be exposed to dust or water
- IP65 rated standard
- Front door has 130 degrees of movement, swinging from left to right
- Sealed bottom cable entry gland
- Static Loading: 60kg
- Adjustable 19" rack mount rails
- Water and dust proof polyurethane door joint strip
- Optional Plinths available to floor mount cabinets
- Wall mount accessories included
- Fully welded design, supplied complete, no assembly required
- Made from cold rolled steel
- Surface finish: Degreasing, pickling, phosphoric wash, cleaning, and powder coated
- 2 Year Warranty on cabinet. Subject to use within the static loading specifications, operation within normal environmental conditions and adequate and appropriate mounting installation
- If installed, 1 Year Warranty on fans

FLOOR MOUNT PLINTHS

MODEL CODE	DIMENSIONS (WxDxH)
RODWPL-400	600 x 400 x 100mm
RODWPL-600	600 x 600 x 100mm



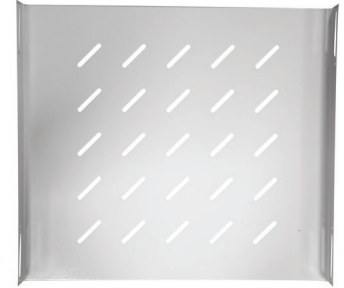
RODWPL-400



RODWPL-600

MODEL CODE	CAPACITY	DIMENSIONS (W x D x H EXTERNAL mm)
RODW6-400	6U	Cabinet: 600 x 400 x 350 / Incl Hood: 610 x 425 x 390
RODW9-400	9U	Cabinet: 600 x 400 x 475 / Incl Hood: 610 x 425 x 515
RODW9-500	9U	Cabinet: 600 x 500 x 475 / Incl Hood: 610 x 525 x 515
RODW9-600	9U	Cabinet: 600 x 600 x 475 / Incl Hood: 610 x 625 x 515
RODW12-400	12U	Cabinet: 600 x 400 x 600 / Incl Hood: 610 x 425 x 640
RODW12-600	12U	Cabinet: 600 x 600 x 600 / Incl Hood: 610 x 625 x 640
RODW18-400	18U	Cabinet: 600 x 400 x 875 / Incl Hood: 610 x 425 x 915
RODW18-600	18U	Cabinet: 600 x 600 x 875 / Incl Hood: 610 x 625 x 915
RODW24-400	24U	Cabinet: 600 x 400 x 1160 / Incl Hood: 610 x 425 x 1200
RODW24-600	24U	Cabinet: 600 x 600 x 1160 / Incl Hood: 610 x 625 x 1200

FIXED SHELVES	
MODEL CODE	DIMENSIONS (WxD)
RODFS-400	800 x 230
RODFS-600	800 x 350



OUTDOOR CABINET

NON-VENTED OUTDOOR WALL MOUNTED CABINET

