

Cat6 Coloured Keystone Jacks

MODEL CODE	TYPE	COLOUR
FP-C6-GREEN	180°	Green
FP-C6-BLUE	180°	Blue
FP-C6-RED	180°	Red
FP-C6-YELLOW	180°	Yellow

CAT6 RJ45 colour coded jacks, supporting dual T586A / T586B wiring specifications. Krone/110 compatible



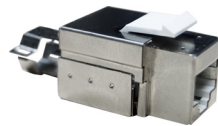
FP-C6-GREEN

Shielded Keystone Jacks

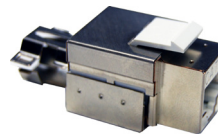
MODEL CODE	TYPE
FP-C5ES-010	Cat5e, 90°
FP-C6S-010	Cat6, 90°

Shielded Keystone jacks
Dual Termination 110 / Krone

FP-C5ES-010



FP-C6S-010



AMDEX RJ45 Jacks T568A/B

MODEL CODE	TYPE
FP-JACK C5E	Cat5e, 180°
FP-C6-005	Cat6, 180°

Cat5e & Cat6 180° RJ45 AMDEX jacks supporting T586A wiring specifications for AMDEX face plates

Rapid termination tool available.
Model: CT-AMDEX



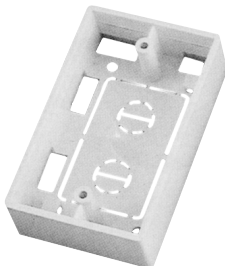
FP-JACK C5E

FP-C6-005

Face Plate Mounting Box

MODEL CODE	TYPE
FP-MBOX38	38mm

Mounting box for face plates - 38mm



Keystone Face Plates

MODEL CODE	PORTS	TYPE
FP-1KS	1	2 piece
FP-2KS	2	2 piece
FP-110 SINGLE	1	
FP-110 DUAL	2	
FP-110 TRIPLE	3	
FP-110 QUAD	4	

Keystone face plates are wall mount fittings that house Krone/110 compatible Keystone jacks



FP-110 DUAL



FP-1KS



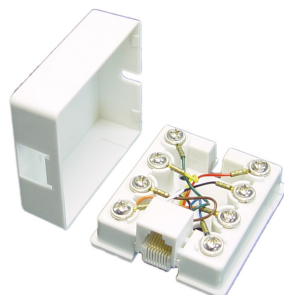
AMDEX Face Plates

MODEL CODE	PORTS	TYPE
FP-1PV2	1	2 piece
FP-2PV2	2	2 piece
FP-3PV2	3	2 piece
FP-4PV2	4	2 piece
FP-5PV2	5	2 piece
FP-6PV2	6	2 piece
FP-BLV2	Blank Plate	2 piece
FP-BLANK	Blank Filler	1 piece



Floor Mount Terminals

MODEL CODE	PORTS
FMT-RJ12	1 Port, Voice RJ12
FMT-RJ45	1 Port, Voice RJ45



FMT-RJ45

Floor Mount Terminals

MODEL CODE	PORTS
FMT-SINGLE	1 Port, Cat5e, RJ45
FMT-DUAL	2 Port, Cat5e, RJ45



FMT-SINGLE

Plasterboard "C" Clip

MODEL CODE	TYPE
FP-CCLIP	Face Plate Plasterboard C Clip (Box of 50 Pieces)

