

FLUSH MOUNTED SINGLE RECESSED SOCKET

DESCRIPTION

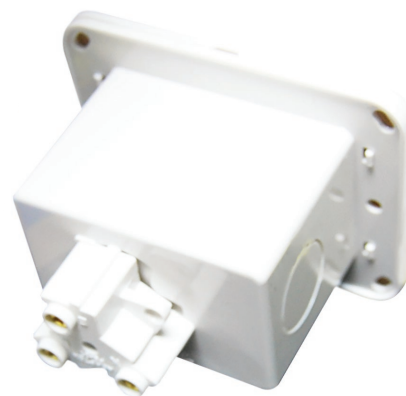
Our DYNAMIX recessed single power socket is ideal for use behind kitchen appliances, tv/av cabinets, flat screen tv, bedroom furniture and any other appliance placed flush against the wall. Can be installed using a standard "C" clip.

FEATURES

- Suitable for residential and commercial buildings
- Can be mounted using a standard "C" clip
- Designed for 60mm and 90mm wall cavities
- Good quality heat resistant plastic
- Cut out dimensions: 76mm x 52mm
- Colour: White



AV-RPS01



AV-RPS01 (Rear)

PRODUCT CODE	DESCRIPTION	OUTLETS
AV-RPS01	Flush mounted single recessed socket	1

SPECIFICATIONS

Overall Dimension	102x77x55mm (WxHxD)
Cut-out Dimensions	76x52mm (WxH)
Material	Polycarbonate thermoplastic
Voltage	10A 250V
Colour	White
Package Contents	1x DYNAMIX Recessed Single Power Outlet, 2x Install Screws

ALSO AVAILABLE:

AV-RPS02



Recessed Wall Box with 2x outlets and 1x GPO Slot. Suitable for 70 & 90mm wall cavities.

AV-RPS03



Recessed Wall Box with 2x outlets & 2x GPO slots. Suitable for 70 & 90mm wall cavities

AVB400

Recessed entertainment box delivering AV, data & power in wall Connectivity. 3x Device/Outlet Openings.



AVB300

Recessed entertainment box with AV, data & power in wall connectivity. Supplied - optional lockable lid.



Please note we took the up-most care to compile the information in this datasheet. To the best of our knowledge all info provided were correct at the time of creation. Should any specs change we try to update info accordingly. Information are subject to change without notice. In the case that you find any irregularity please inform our team at contactus@dynamix.co.nz

Last updated: 31 AUGUST 2022