

## LS60 Wireless Wireless HiFi Speakers



Obsessed with sound quality and committed to bringing a superior listening experience, KEF has been pioneering innovative acoustic engineering since 1961. Celebrating 60 years of innovation in technology, performance and design, LS60 Wireless is our vision of high-fidelity for the future. As KEF's first wireless tower stereo system, LS60 Wireless aims to bring high-fidelity sound to more people in their homes.

For LS60 Wireless KEF's engineers have seamlessly combined elements of the iconic Blade's Single Apparent Source technology, a specially designed 12<sup>th</sup> Generation Uni-Q driver array, the revolutionary Metamaterial Absorption Technology<sup>1</sup> (MAT™), Uni-Core bass drivers and much more besides. The final pieces of the jigsaw are the forward-thinking W2 wireless platform and a wide range of wired inputs, ensuring LS60 Wireless can play all major music services and supports all major audio sources.

The combination of all KEF's key technologies delivers superlative acoustic performance and allows LS60 Wireless to be incredibly slim with highly distinctive look. The ultra slim profile of the speakers makes room placement easier for different spaces within people's homes.

### PERFORMANCE

#### Celebrating 60 years of acoustic innovation

LS60 Wireless is the world's first Single Apparent Source wireless system. The unique Single Apparent Source technology is adapted from KEF's flagship Blade speaker. By precisely placing the LF drivers equidistant around the Uni-Q driver array, it achieves the acoustic ideal of a point source where low, mid and high frequencies radiate from one single point. The result is noticeably more precise imaging and highly accurate sound across a wider listening area.

At the heart of LS60 Wireless' Single Apparent Source design sits the remarkable 12<sup>th</sup> Generation Uni-Q with MAT driver array. Specially designed to perform at its best in the LS60 Wireless, this cutting-edge Uni-Q boasts a host of refinements including a tweeter gap damper and new Z-Flex surround that ensure a near-perfect transition of sound from the speaker into the room. With the MAT that acts as an acoustic black hole, 99% of the unwanted sound that comes from the rear of the tweeter is absorbed, eliminating the resulting distortion and providing a purer, more natural acoustic performance. Together, these innovations and refinements deliver a super-wide sweet spot, uncannily natural sound with vanishingly low distortion.

The slim profile of the speakers and close positioning of the drivers in the Single Apparent Source configuration call for a novel approach to bass driver design. As a result, LS60 Wireless features 2 pairs of Uni-Core driver arrays, first found on the KC62 subwoofer, maximising bass performance while minimising space. KEF's P-Flex and Smart Distortion Control Technology also play their parts, ensuring that the low frequency performance is as balanced and detailed as the audio derived from the Uni-Q driver array. In addition, the bass drivers are mounted back-to-back as force-cancelling arrangement, cabinet vibration is practically eliminated.

#### Smart and powerful

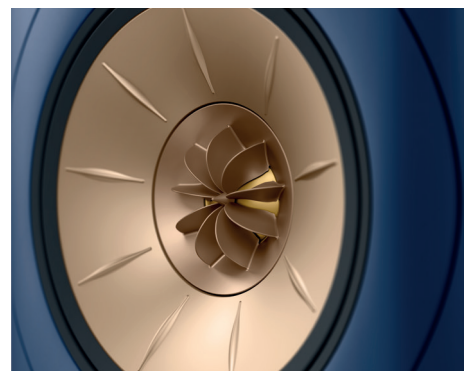
The Music Integrity Engine brings together the Single Apparent Source configuration and other KEF acoustic technologies, allowing them to work closely, and elevating the impact of each. The brain behind most of KEF's wireless speakers, Music Integrity Engine offers a suite of bespoke Digital Signal Processing algorithms (DSPs), enabling it to deliver a perfectly timed performance with better imaging and a tighter sound. The Music Integrity Engine for LS60 Wireless features low-frequency phase correction. This new feature does more than ensuring perfect timed performance, it delivers pinpoint timing exactly as if you were listening to the original sound.

The LS60 Wireless also has power in abundance, with a highly optimised mixture of bespoke Class AB and Class D amplification delivering a combined 1400 Watts of audiophile-grade power, with amplifiers dedicated to high, medium and low frequencies within each speaker. This power is smartly managed, so each driver receives precisely what it needs to perform at its best, meaning LS60 Wireless is capable of a beautifully balanced performance at any volume level.

LS60 Wireless also offers you the choice of wired or wireless interspeaker connectivity. You can choose a wired connection with resolution up to 24bit/192kHz or use KEF's low-latency intelligent wireless interspeaker connection, which provides exceptionally reliable cable-free listening up to 24bit/96kHz.

#### Summary of features

- Plays all major music services and supports all major audio formats
- Wireless both from source and between the speakers
- Comprehensive connectivity including WiFi, Bluetooth, HDMI eARC, Optical, Coaxial, RCA
- Personalised listening experience via KEF Connect app
- Single Apparent Source technology for coherent, immersive sound
- 12<sup>th</sup> Generation Uni-Q with Metamaterial Absorption Technology (MAT™) for exceptional acoustic accuracy
- 4 x 5.25" Uni-Core force-cancelling drivers to maximise bass performance
- Music Integrity Engine for rich, full-bodied sound
- PCM up to 24bit/384kHz, DSD and MQA
- System power of 1400W with dedicated amplifiers for HF, MF and LF
- Design by Michael Young and KEF Product Design team
- Available in 4 finishes: Titanium Grey, Mineral White, Royal Blue and Carbon Black



## CONNECTIVITY

### Play anything. Hear everything.

LS60 Wireless utilises the class-leading W2 wireless platform KEF introduced on the award-winning LS50 Wireless II. Delivering robust, high-quality streaming using any format you can imagine, the W2 platform provides the choice, connectivity and control that is the bedrock of un-rivalled user experience.

No matter how you stream your music, LS60 Wireless has you covered with out-of-the-box wireless compatibility with Wi-Fi, Apple AirPlay 2, Google Chromecast and Bluetooth. Using the KEF Connect app you can stream Amazon Music, Qobuz, and Deezer or tune in to internet radio and podcasts. You can use native apps to stream directly from Spotify Connect, Tidal and QPlay, and it is Roon Ready. LS60 Wireless also supports the streaming of PCM files up to 24bit/384kHz, as well as MQA decoding and DSD.

The connection options don't stop there, LS60 Wireless also supports all your wired sources whether you love to listen to vinyl records on your turntable or want to get the best possible sound from your CD player and games console. There's also an HDMI (eARC) connection for a high-quality link up with your TV, and a dedicated output on each of the two speakers for the addition of one or two KEF subwoofers.

LS60 Wireless is more than a high-fidelity speaker system - it is designed to enhance your everyday life. Seamlessly integrate LS60 Wireless into your smart home to browse and play music, select sources, or use controls such as play, pause, and adjust the volume via your smart home app or control interface.

## USABILITY

### Effortless control

The KEF Connect app walks you through the set-up and features intuitive sound settings so you can fine-tune LS60 Wireless to best suit your room; there are normal and expert modes so you can get the best performance regardless of your knowledge of acoustics. The app first lets you effortlessly connect the LS60 Wireless to your home network, before providing control over every aspect of the performance.

## DESIGN

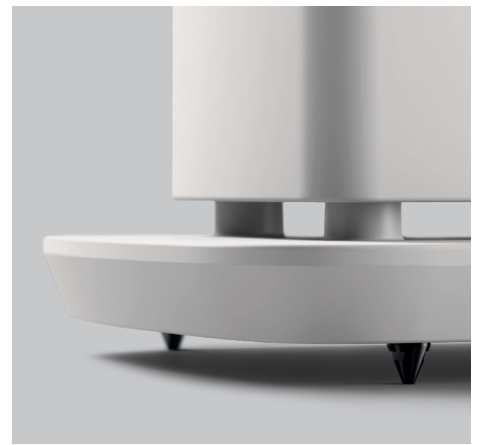
### Impossibly slim. Made possible.

The LS60 Wireless' extremely slim design is only possible because of the advanced technologies contained within the sleek cabinet. The product of a joint design by renowned designer Michael Young and the KEF product design team, LS60 Wireless is an exceptionally elegant loudspeaker that can fit effortlessly into a wider range of living spaces, both because of its looks and thanks to a broader range of placement possibilities.

Finally, LS60 Wireless is available in four elegant matte finishes: Titanium Grey, Mineral White, Royal Blue and Carbon Black. This colour scheme is designed to fulfil two types of approach to interior design. Titanium Grey, Mineral White and Carbon black are made to be integrated and blended into various spaces while Royal Blue, a more striking finish, is perfect for people who are determined to make a statement. All of the finishes feature tone-matched drive units and detailing to round off a truly exceptional loudspeaker.

## IN THE BOX

- LS60 Wireless
- Power cords
- Interspeaker cable
- Remote control
- Optional floor spikes
- Quick Start Guide, warranty and safety information





Royal Blue      Mineral White      Titanium Grey      Carbon Black

## Specifications

Model	LS60 Wireless
Drive units (per speaker)	Uni-Q Driver Array: HF: 19 mm (0.75 in.) vented aluminium dome with Metamaterial Absorption Technology <sup>1</sup> MF: 100 mm (4in.) aluminium cone Uni-Core Force Cancelling Driver: LF: 4 x 135 mm (5.25 in.)
Frequency range (-6dB) measured at 85dB/1m	26 Hz - 36 kHz *Depends on EQ settings
Frequency response (±3dB) measured at 85dB/1m	31 Hz - 24 kHz *Depends on EQ settings
Amplifier output power (per speaker)	LF: 500W MF: 100W HF: 100W
Amplifier class (per speaker)	LF: Class D MF: Class D HF: Class AB
Max SPL measured at 1m	111 dB
Wireless streaming features	AirPlay 2, Google Chromecast, Roon Ready, UPnP Compatible, Bluetooth 4.2
Streaming services	Spotify via Spotify Connect , Tidal via Tidal Connect, Amazon Music , Qobuz, Deezer , QQ Music via QPlay, Internet Radio, Podcast *Depends on services availability in different countries
Input resolution	Network up to 24bit/384kHz Optical up to 24bit/96kHz Coaxial up to 24bit/192kHz HDMI up to 24bit/192kHz *Depends on source resolution
Interspeaker connection	Wireless: all sources resampled to 24bit/96kHz PCM Wired: all sources resampled to 24bit/192kHz PCM
Supported format (all inputs)	FLAC, WAV, AIFF, ALAC, AAC, WMA, MP3, M4A, LPCM and Ogg Vorbis
Supported format (network)	MQA, DSD
Home automation system	Elan, RTi, Crestron Home, Savant, Control4
Dimensions (HWD per speaker)	1090 x 212 x 394 mm (42.9 x 8.3 x 15.5 in.) with plinth 1042 x 130 x 321 mm (41.0 x 5.1 x 12.6 in.) without plinth
Weight (per set)	62.4 kg (138 lbs)
Power input	100 – 240VAC 50/60Hz
Power consumption	450W (operating power) <2.0W (standby power)

	Primary speaker	Secondary speaker
Inputs	HDMI eARC TOSLINK Optical Digital Coaxial Analog RCA USB Type A (service) RJ45 Ethernet (network) RJ45 Ethernet (interspeaker)	USB Type A (service) RJ45 Ethernet (interspeaker)
Output	RCA Subwoofer output	RCA Subwoofer output
Wi-Fi network standard	IEEE 802.11a/b/g/n/ac IPv4, IPv6	-
Wi-Fi network frequency band	Dual-band 2.4 GHz / 5 GHz	-

<sup>1</sup> Metamaterial Absorption Technology is a joint development with Acoustic Metamaterials Group.

Visit: [KEF.com](https://www.kef.com) for more about KEF and its products.

KEF reserves the right, in line with continuing research and development, to amend or change specifications. E&OE.