

IP45 RATED CABINET VENTILATED DUST PROOF/OUTDOOR WALL MOUNTED CABINET

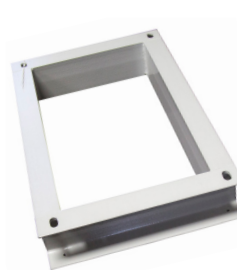


FEATURES:

- Designed to protect sensitive network equipment from harsh environments where equipment may be exposed to dust or water
- IP45 rated
- Serviceable filters and air vents on the front door
- Front door has 130 degrees of movement, swinging from left to right
- Dual fan kit included in roof
- Rain hood can be opened to access fans and filter
- Sealed bottom cable entry gland
- Static Loading: 60kg
- Adjustable 19" rack mount rails
- Water and dust proof polyurethane door joint strip
- Optional Plinths available to floor mount cabinets
- Wall mount accessories included
- Fully welded design, supplied complete, no assembly required
- Made from cold rolled steel
- Surface finish: Degreasing, pickling, phosphoric wash, cleaning, and powder coated
- 2 Year Warranty on cabinet. Subject to use within the static loading specifications, operation within normal environmental conditions and adequate and appropriate mounting installation if installed, 1 Year Warranty on fans

FLOOR MOUNT PLINTHS

MODEL CODE	DIMENSIONS (WxDxH)
RODWPL-400	600 x 400 x 100mm
RODWPL-600	600 x 600 x 100mm



RODWL-400



RODWL-600

Model Code	Capacity	WxDxH (Internal)	WxDxH (External)	Includes
RODW9-600FK	9U	546 x 575 x 421mm	611 x 675 x 560mm	Dual extraction fans, input/output air filters
RODW9-400FK	9U	546 x 375 x 421mm	611 x 475 x 560mm	Dual extraction fans, input/output air filters
RODW12-400FK	12U	600 x 400 x 600mm	610 x 425 x 640mm	Dual extraction fans, input/output air filters
RODW12-600FK	12U	600 x 600 x 600mm	610 x 625 x 640mm	Dual extraction fans, input/output air filters
RODW18-400FK	18U	600 x 400 x 875mm	610 x 425 x 915mm	Dual extraction fans, input/output air filters
RODW18-600FK	18U	600 x 600 x 875mm	610 x 625 x 915mm	Dual extraction fans, input/output air filters
RODW24-400FK	24U	600 x 400 x 1160mm	610 x 425 x 1200mm	Dual extraction fans, input/output air filters
RODW24-600FK	24U	600 x 600 x 1160mm	610 x 625 x 1200mm	Dual extraction fans, input/output air filters

OTHER CABINETS SIZES AVAILABLE ON REQUEST

www.dynamix.co.nz | www.dynamix.net.au

IP45 RATED CABINET VENTILATED DUST PROOF/OUTDOOR WALL MOUNTED CABINET

Rain hood included
as standard



Serviceable
Drop In Fan Kit



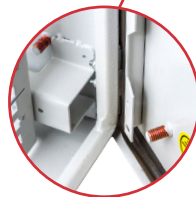
Dual Fan Kit



Sealed bottom
cable entry



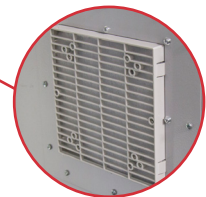
19" Adjustable Front and
Rear Mounting Rails



Grounding pin



Polyurethane
door joint strip



Serviceable Filter
for Air Vents



Dual
locking system



Air Vents on
Front Door

FIXED SHELVES	
MODEL CODE	DIMENSIONS (WxD)
RODFS-400	800 x 230
RODFS-600	800 x 350

